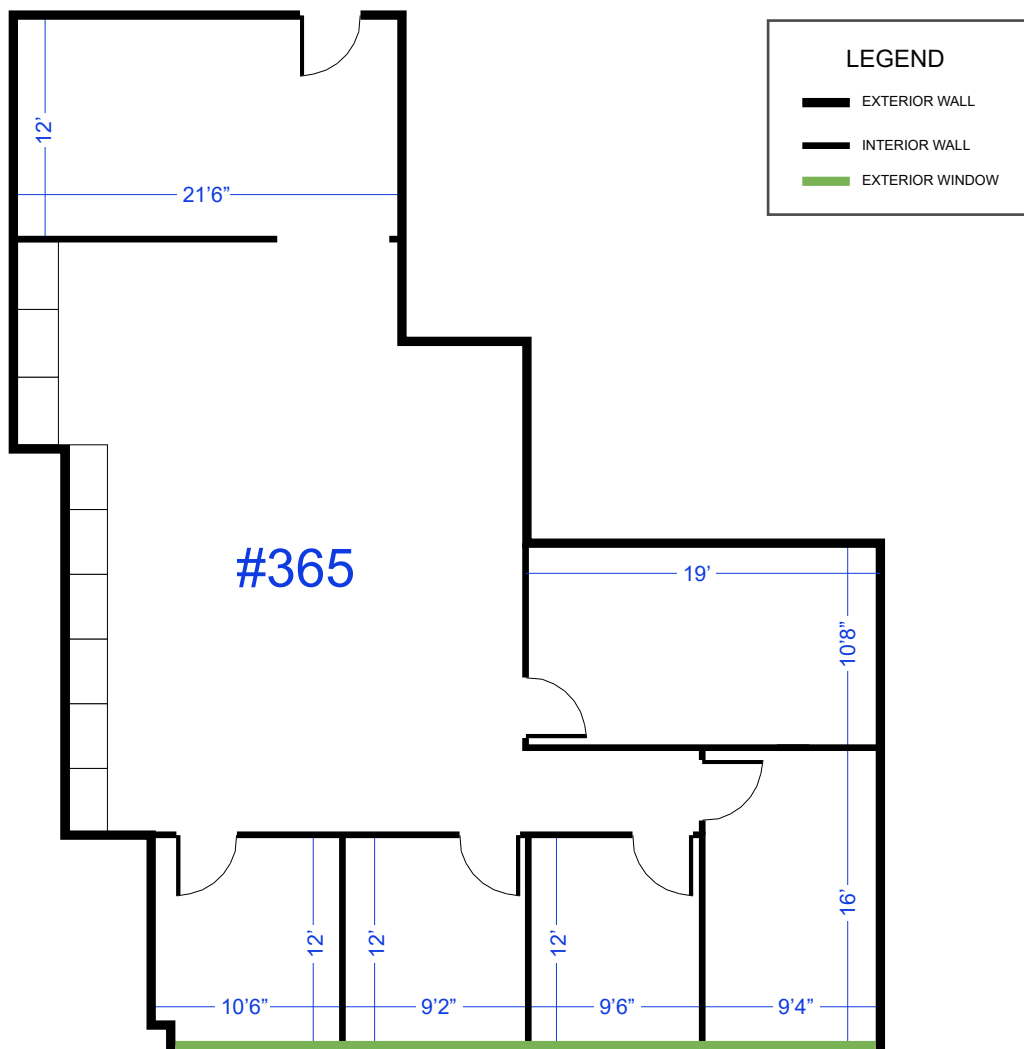


Carrier-360 Office Building Suite #365

2080 N Hwy 360, Grand Prairie, Texas 75050

Office Space - Available Immediately

2,035 RSF

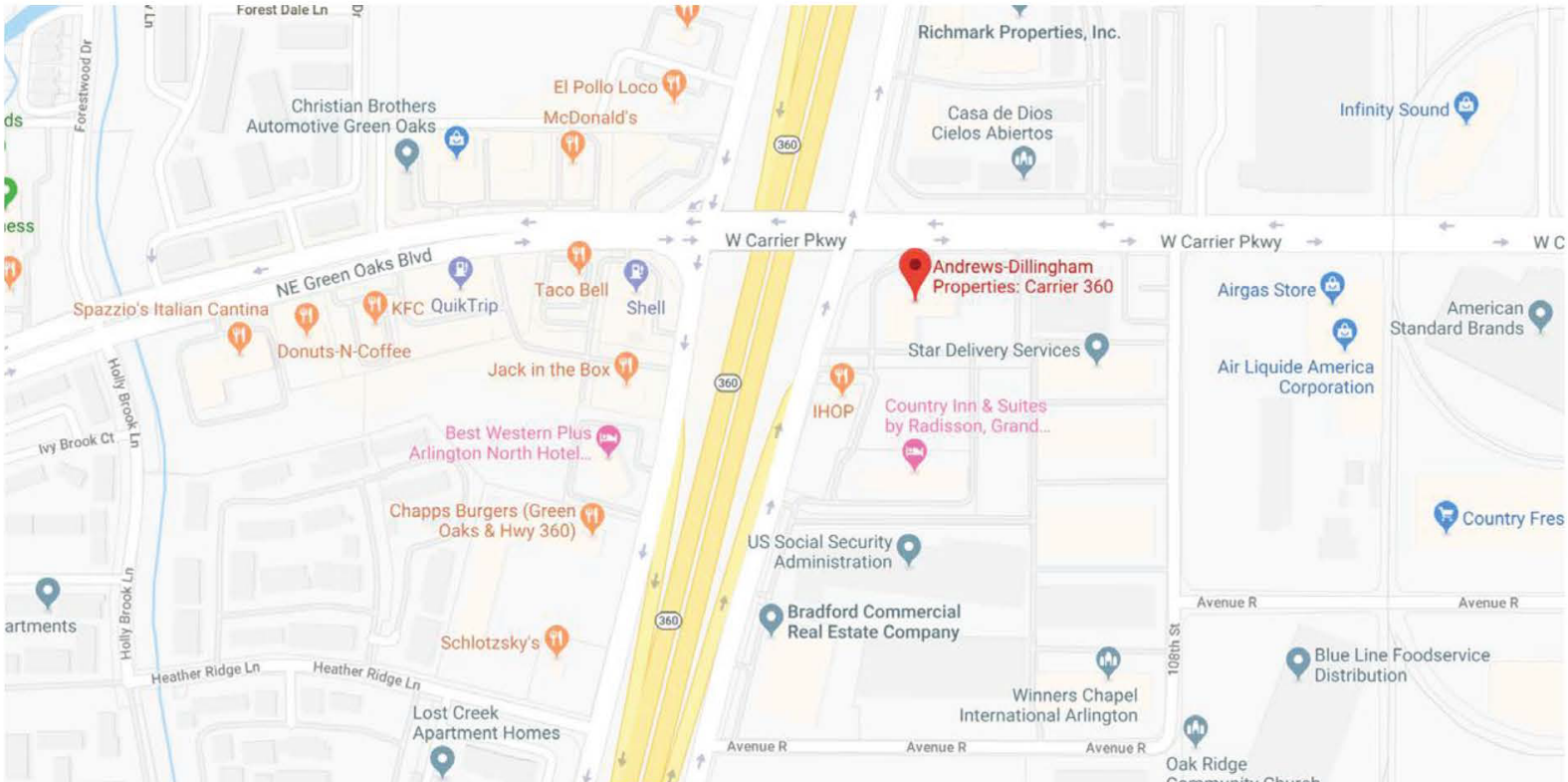


Highlights & Amenities

- 4 Story Office Building with a great mid-cities location
- Great N. Highway-360 Frontage & Visibility
- Flexible "Full-Service" lease terms
- Abundant Parking
- 24-hr card access entry system
- On-site Management and Leasing
- 7 min to DFW and 18 min to Love Field Airport



Area Highlights



Gary Smith
(214) 638-0577
Real Estate Broker
gary@andrews-dillingham.com